

Wilson Elementary School Community Meeting

May 24, 2018 at 6:00 p.m.



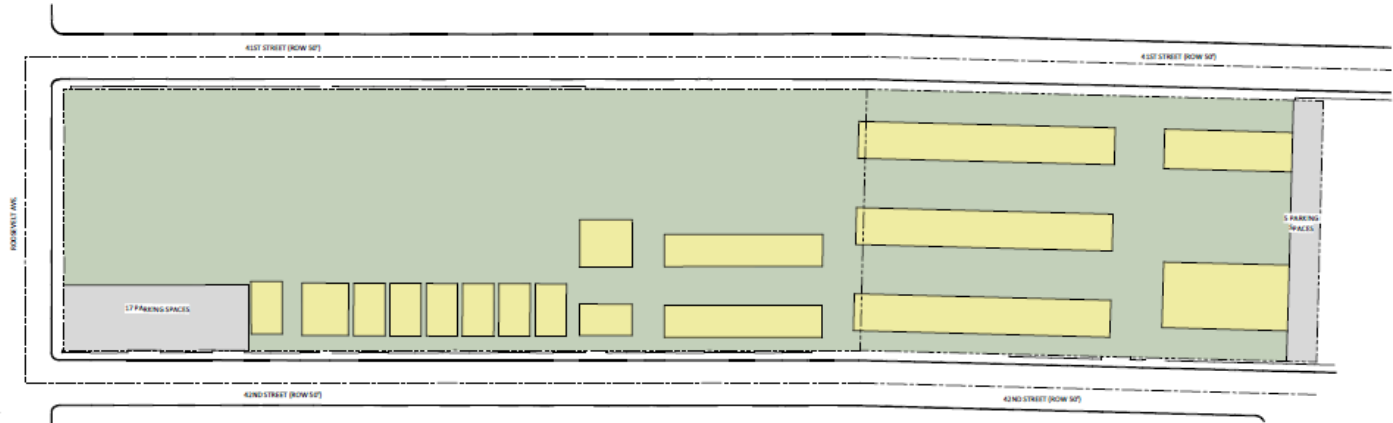
Agenda

- Review of Schematic Design Plans
 - Existing v. Proposed Campus
 - Site Plan
 - Floor Plans
 - Aerial View
 - Entry Plaza
- Updated Wilson ES Timeline
- Review of Transportation Logistics for FY 19

Existing v. Proposed Campus

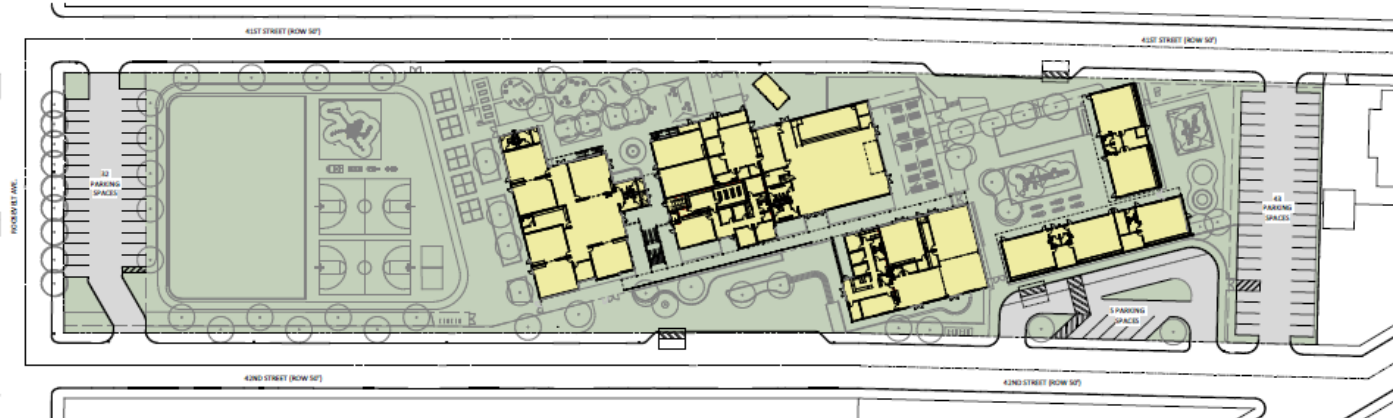
EXISTING CAMPUS

BUILDING AREA	41,000 SQFT
OUTDOOR SPACE	139,996 SQFT
PARKING (22 CARS)	11,528 SQFT
PORTABLES	10
STUDENT CAPACITY	509



PROPOSED CAMPUS

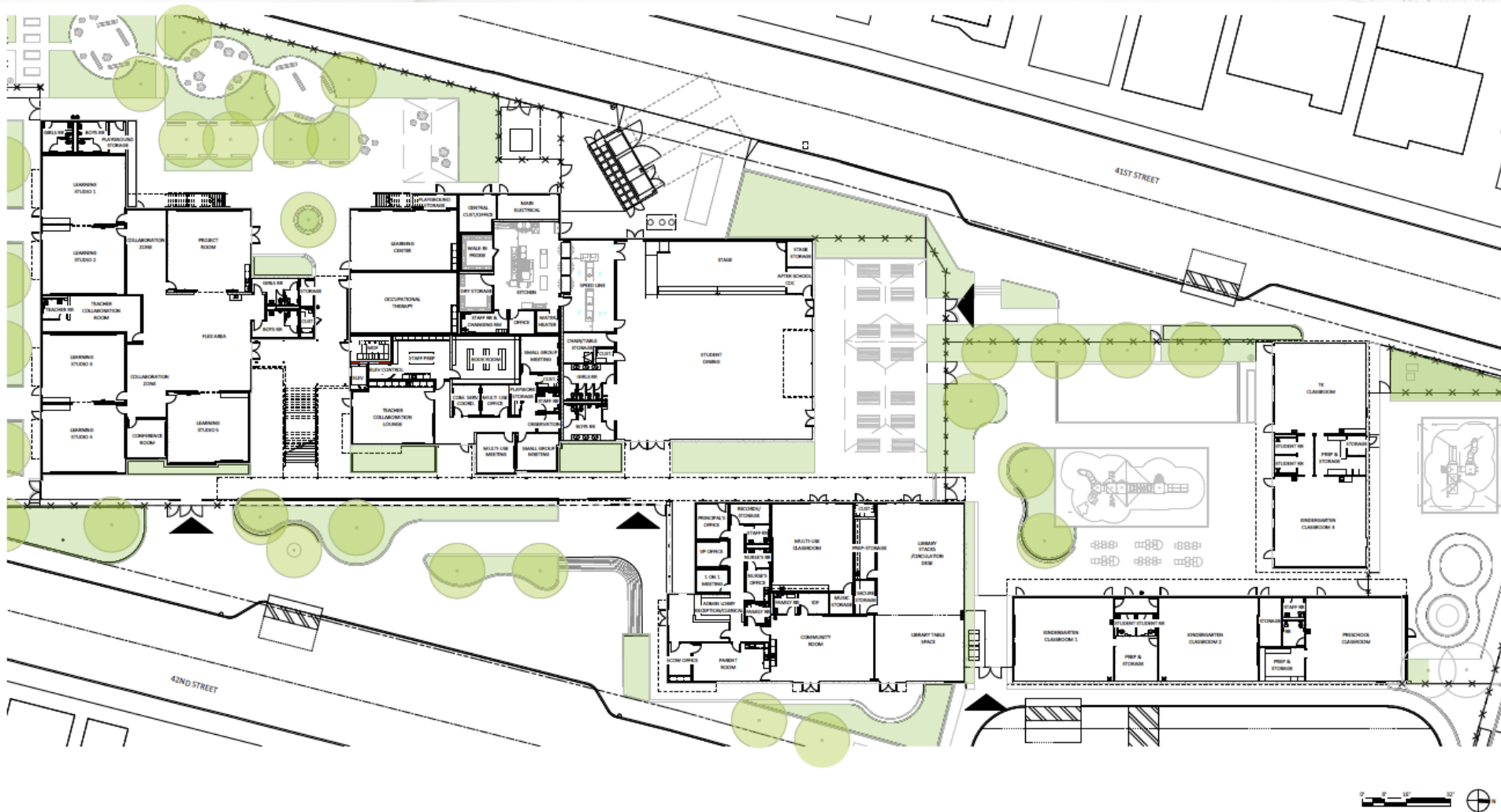
BUILDING AREA	52,668 SQFT
OUTDOOR SPACE	126,197 SQFT
PARKING (80 CARS)	28,889 SQFT
PORTABLES	0
STUDENT CAPACITY	600



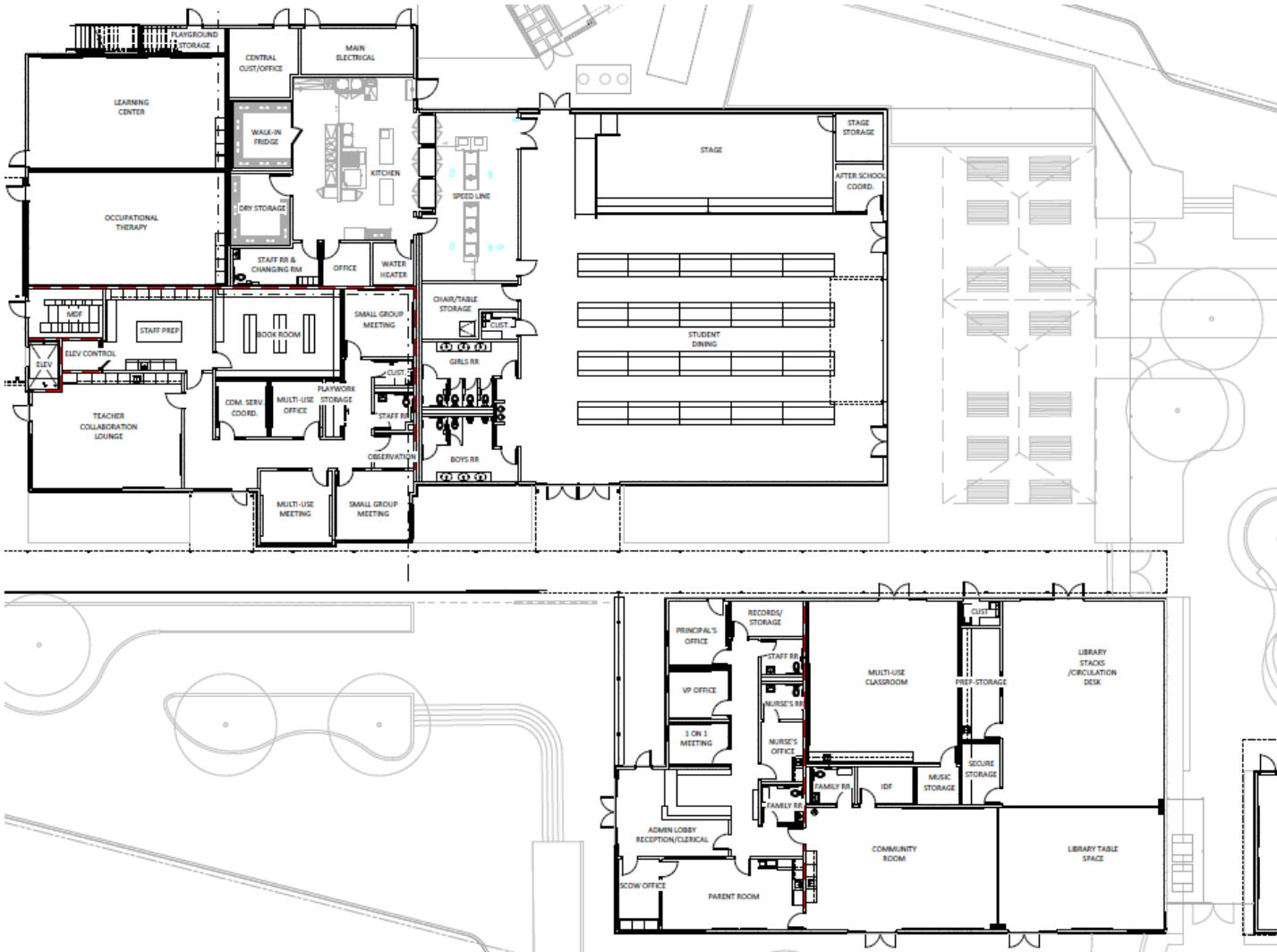
Site Plan



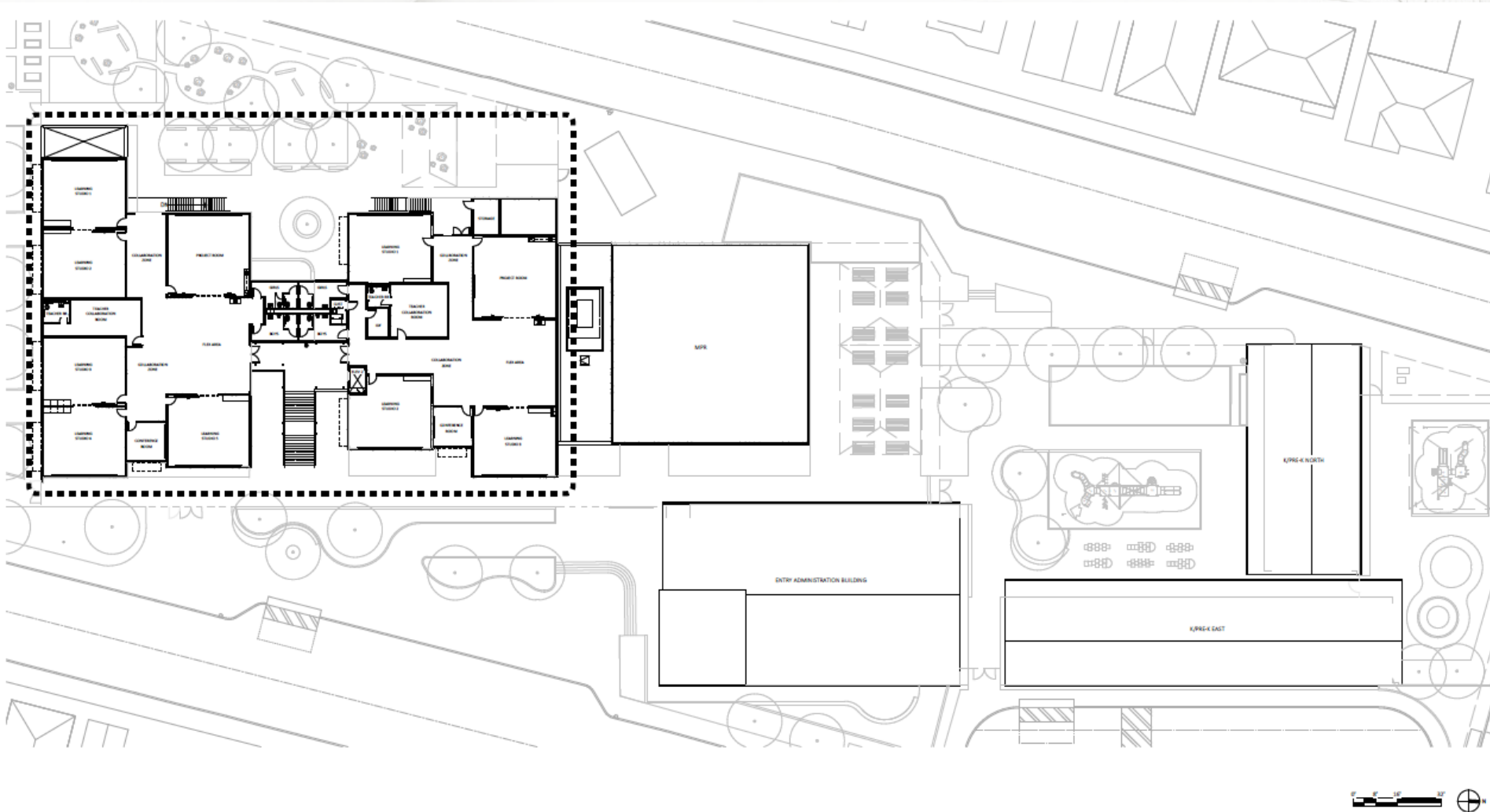
Level 1 Floor Plan



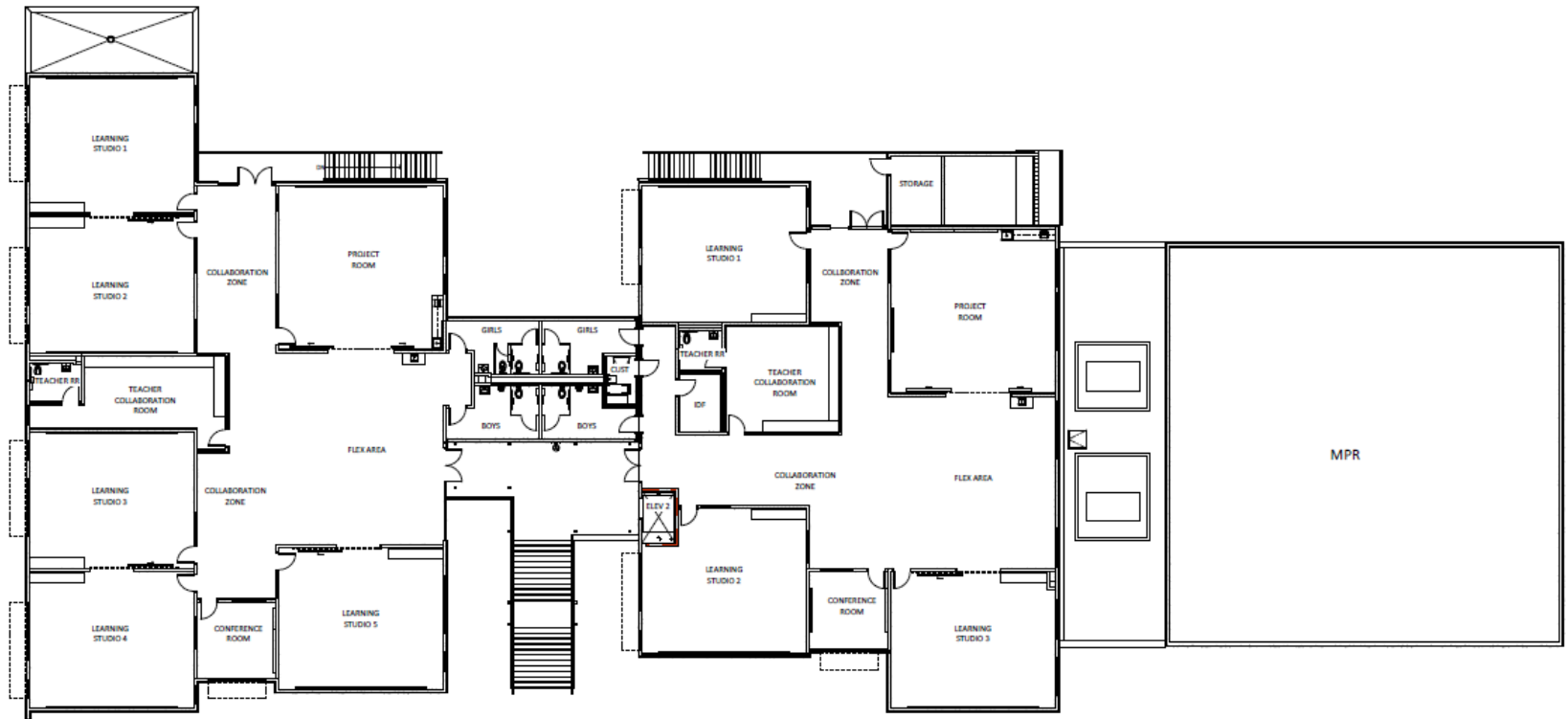
Level 1 Floor Plan Admin & MPR



Level 2 Floor Plan



Level 2 Floor Plan Learning Suites



Aerial View



Main Drop-Off Plaza View



Wilson ES Projected Timeline



**Board
Approval of
Design-Build
Contract**

**Staff Review
of Schematic
Design &
Temporary
Campus**

**Community
Meeting
Review of
Schematic
Design &
Transportation
logistics**

**Wilson Move
to Temp
Campus**

**Wilson ES
will be
located at
Temp
Campus**

**Wilson
Demolition
&
Construction**

**Wilson to
occupy new
campus**

Note: DSA review times and unknown conditions in construction may effect project timeline



Wilson ES Transportation

- Supervision
- Pick up & Drop off Locations
- Permission Slip
- Bell Schedule
- Transportation FAQ
- Email questions to wilsontransportation@wccusd.net

Next Steps

- Transportation FAQ will be prepared, posted on-line and updated throughout the summer
- Communicate updates with Wilson community